

## EMLAK KONUT SEMT BAHÇEKENT - 1+1 APARTMENT / RESIDENCE Istanbul / Başakşehir

For Sale - Apartment 2,100,000 TL | 68 m2 Istanbul / Başakşehir



# Rooms : 1  
# Saloons : 1  
# Baths : 1  
Type of Property : Apartment Flat  
Property Condition : Brand New  
Property Direction : East  
West  
North  
South



İsmail Can

Phone +90 542-811 80 80

Mobile Phone +90 542-811  
80 80



REALTY GALAXY

Phone +90 542-811 80 80

Mobile Phone +90 533-382  
39 79

Fax +90 212-855 74 75

Yavuz Sultan Selim Bulvarı

Büyükkçekmece /

Büyükkçekmece

34528 , Istanbul

Advert No:f-494589-955

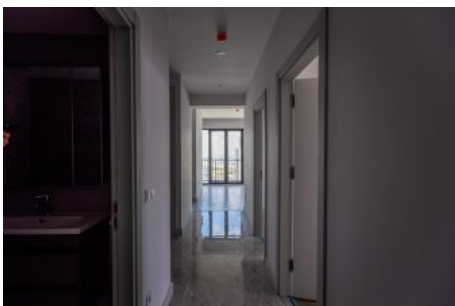
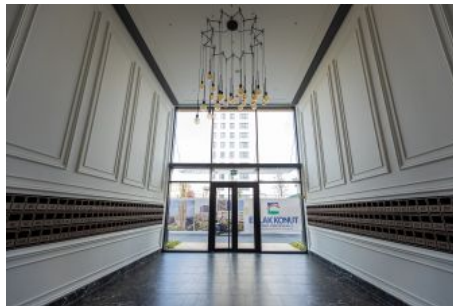
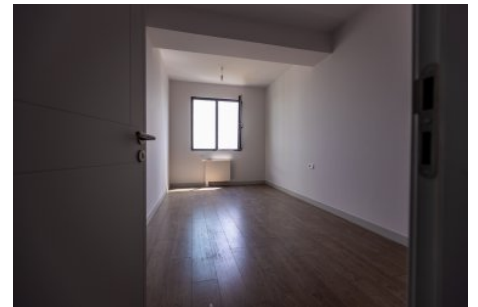
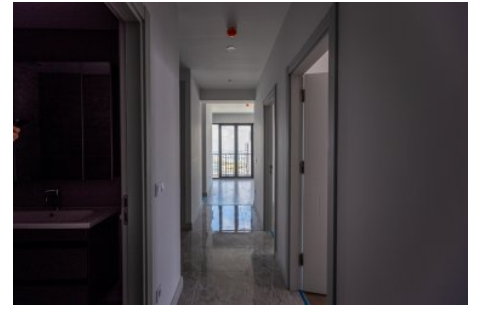
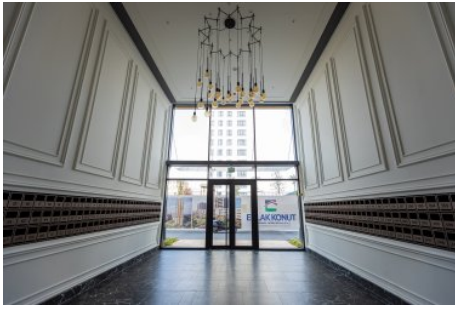
---

- \* Internal Properties : Alarm, Balcony, Steel Door, Diaphone with screen, Security System,
- \* Building : Elevator / Lift, Earthquake Regulation Proof, Doorman, Ground Survey, Reinforced Concrete, Parking, Fire Alarm,
- \* Environment : Shopping Center, Kindergarten, ATM, Bank, Gas Station, Cafe, Drugstore, Drugstore / Medical, Entertainment Center, Elementary School, Cafeteria, Nursery, Coiffure & Beauty Center, High School, Market, Game Park, Park, Post Office, Restaurant, Health Center, District Bazaar, University, Veterinary, School,
- \* Compound : Children Swimming Pool, Fitness Center, Security, Parking - Outdoor, Parking - Indoor, Social Facility, Gym, Jogging / Walking Areas, Swimming Pool, Swimming Pool (Indoor), Security Camera,

Advert No:f-494589-955



Advert No:f-494589-955

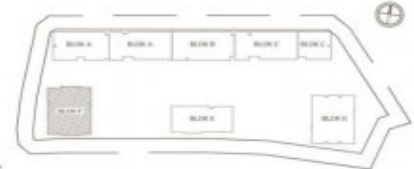


Advert No:f-494589-955



### 1P G3 F BLOK 3+1 DAİRE PLANI

Giriş holü	8,57 m <sup>2</sup>
Salon	23,17 m <sup>2</sup>
Mutfak	8,84 m <sup>2</sup>
Yatak odası 1	8,09 m <sup>2</sup>
Yatak odası 2	8,11 m <sup>2</sup>
Ebeveyn yatak odası	14,70 m <sup>2</sup>
Ebeveyn banyo	3,11 m <sup>2</sup>
Banyo	3,37 m <sup>2</sup>
Çamaşır odası	1,85 m <sup>2</sup>
Koridor	3,43 m <sup>2</sup>
Balkon 1	11,81 m <sup>2</sup>
Balkon 2	5,68 m <sup>2</sup> - 5,90 m <sup>2</sup>
Balkon 3	7,68 m <sup>2</sup>
Balkon 5	4,91 m <sup>2</sup> - 5,30 m <sup>2</sup>
Balkon 6	6,71 m <sup>2</sup>
Balkon 4 (açık balkon)	4,38 m <sup>2</sup>



Net alan : 120,01 m<sup>2</sup> - 120,44 m<sup>2</sup> Balkon dahil toplam net alan : 124,39 m<sup>2</sup> - 124,82 m<sup>2</sup>  
Açık Balkon : 4,38 m<sup>2</sup> Satışa esas brüt alan : 176,24 m<sup>2</sup>



Tüm ölçüler yapıya göre ölçülmüştür. Ölçüler, ölçüm hataları hariç olmak üzere, ölçüm hataları hariçtir.



### 1P D D BLOK 1+1 DAİRE PLANI

Giriş holü	1,28 m <sup>2</sup>
Salon	16,45 m <sup>2</sup>
Mutfak	5,05 m <sup>2</sup>
Banyo	3,11 m <sup>2</sup>
Çamaşır odası	0,29 m <sup>2</sup>
WC	1,22 m <sup>2</sup>
Balkon 1	1,48 m <sup>2</sup>
Balkon 2	1,20 m <sup>2</sup>



Net alan : 22,22 m<sup>2</sup> Balkon dahil toplam net alan : 22,22 m<sup>2</sup>  
Açık Balkon : 0,00 m<sup>2</sup> Satışa esas brüt alan : 27,00 m<sup>2</sup>

### 1P C1 D BLOK 1+1 DAİRE PLANI

Giriş holü	2,22 m <sup>2</sup>
Salon	16,71 m <sup>2</sup>
Mutfak	5,05 m <sup>2</sup>
Banyo	3,38 m <sup>2</sup>
Çamaşır odası	0,71 m <sup>2</sup>
Balkon 1	1,28 m <sup>2</sup> - 1,50 m <sup>2</sup>
Balkon 2	4,26 m <sup>2</sup>



Net alan : 28,07 m<sup>2</sup> - 28,42 m<sup>2</sup> Balkon dahil toplam net alan : 32,00 m<sup>2</sup> - 32,22 m<sup>2</sup>  
Açık Balkon : 0,00 m<sup>2</sup> Satışa esas brüt alan : 40,00 m<sup>2</sup>



### 1P I2 F BLOK 2+1 DAİRE PLANI

Giriş holü	3,28 m <sup>2</sup>
Salon	22,22 m <sup>2</sup>
Mutfak	8,84 m <sup>2</sup>
Yatak odası	8,84 m <sup>2</sup>
Ebeveyn yatak odası	14,70 m <sup>2</sup>
Ebeveyn banyo	3,37 m <sup>2</sup>
Banyo	3,37 m <sup>2</sup>
Çamaşır odası	1,85 m <sup>2</sup>
Koridor	3,43 m <sup>2</sup>
Balkon 1	11,81 m <sup>2</sup>
Balkon 2	5,68 m <sup>2</sup> - 5,90 m <sup>2</sup>
Balkon 3	7,68 m <sup>2</sup>
Balkon 4	4,91 m <sup>2</sup> - 5,30 m <sup>2</sup>
Balkon 5	6,71 m <sup>2</sup>



Net alan : 122,01 m<sup>2</sup> - 122,44 m<sup>2</sup> Balkon dahil toplam net alan : 126,99 m<sup>2</sup> - 127,42 m<sup>2</sup>  
Açık Balkon : 0,00 m<sup>2</sup> Satışa esas brüt alan : 180,00 m<sup>2</sup>



Net alan : 70,22 m<sup>2</sup> Balkon dahil toplam net alan : 70,22 m<sup>2</sup>  
Açık Balkon : 0,00 m<sup>2</sup> Satışa esas brüt alan : 100,00 m<sup>2</sup>

Advert No:f-494589-955

