

## Avrasya Başakşehir 2 - 2+1 Istanbul / Başakşehir

عقش - عيبلل 13,600,000 TL | 112 m2 Istanbul / Başakşehir



فرعلا دد : 2  
نولاصللا دد : 1  
تامامحللا دد : 2  
عقش : لكهلا عون  
ةديجة راجتة مالع : ةلودلا لكه  
غراف : مادختساللا عوضو



İsmail Can

Phone +90 542-811 80 80

Mobile Phone +90 542-811  
80 80

REALTY GALAXY

Phone +90 542-811 80 80

Mobile Phone +90 533-382  
39 79

Fax +90 212-855 74 75

Yavuz Sultan Selim Bulvarı

Büyükkçekmece /

Büyükkçekmece

34528 , Istanbul

Advert No:f-494589-1174



Advert No:f-494589-1174



Advert No:f-494589-1174

**2+1 A**

GİRİŞ HOLLÜ	5.36 m <sup>2</sup>
SALON+MUTFAK	19.10 m <sup>2</sup>
YATAK ODASI	9.75 m <sup>2</sup>
E.YATAK ODASI	12.87 m <sup>2</sup>
BANYO	4.76 m <sup>2</sup>
HOL	4.67 m <sup>2</sup>
ÇAMAŞIR ODASI	1.90 m <sup>2</sup>
BALKON	3.80 m <sup>2</sup>

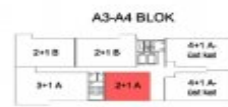
NET ALAN	58.42 m <sup>2</sup>
NET ALAN(balkon dahil)	62.22 m <sup>2</sup>
BRÜT ALAN	71.48 m <sup>2</sup>
SATILABİLİR ALAN	86.89 m <sup>2</sup>
DEPO	3.00 m <sup>2</sup>



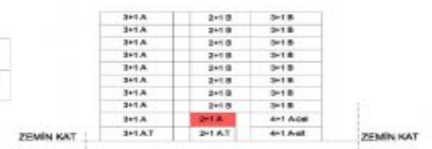
ANAHATIR VAZİYET PLANI



ANAHTAR PLAN



ANAHTAR PLAN



ANAHTAR KESİT

**2+1 D.T**

GİRİŞ HOLLÜ	4.00 m <sup>2</sup>
SALON	16.76 m <sup>2</sup>
MUTFAK	3.71 m <sup>2</sup>
YATAK ODASI	8.80 m <sup>2</sup>
E.YATAK ODASI	13.82 m <sup>2</sup>
BANYO	4.01 m <sup>2</sup>
HOL	3.88 m <sup>2</sup>
TERAS	20.57 m <sup>2</sup>

NET ALAN	60.41 m <sup>2</sup>
NET ALAN(balkon dahil)	74.21 m <sup>2</sup>
SATILABİLİR ALAN	86.80 m <sup>2</sup>
TAHESİLİ TERAS	20.57 m <sup>2</sup>
DEPO	3.00 m <sup>2</sup>



ANAHATIR VAZİYET PLANI



ANAHTAR PLAN

ANAHATIR KESİT

**2+1 C**

GİRİŞ HOLLÜ	7.22 m <sup>2</sup>
SALON	16.24 m <sup>2</sup>
MUTFAK	6.80 m <sup>2</sup>
YATAK ODASI	8.78 m <sup>2</sup>
E.YATAK ODASI	12.28 m <sup>2</sup>
BANYO	4.88 m <sup>2</sup>
HOL	1.88 m <sup>2</sup>
BALKON	3.03 m <sup>2</sup>

NET ALAN	60.01 m <sup>2</sup>
NET ALAN(balkon dahil)	68.22 m <sup>2</sup>
BRÜT ALAN	78.84 m <sup>2</sup>
SATILABİLİR ALAN	86.84 m <sup>2</sup>
DEPO	3.00 m <sup>2</sup>



ANAHATIR VAZİYET PLANI



ANAHTAR PLAN

ANAHATIR KESİT

**2+1 B**

GİRİŞ HOLLÜ	7.47 m <sup>2</sup>
SALON	20.88 m <sup>2</sup>
MUTFAK	10.84 m <sup>2</sup>
YATAK ODASI	8.86 m <sup>2</sup>
E.YATAK ODASI	16.77 m <sup>2</sup>
E.BANYO	6.52 m <sup>2</sup>
BANYO	4.16 m <sup>2</sup>
ÇAMAŞIR ODASI	2.08 m <sup>2</sup>
BALKON	4.88 m <sup>2</sup>

NET ALAN	61.03 m <sup>2</sup>
NET ALAN(balkon dahil)	68.91 m <sup>2</sup>
BRÜT ALAN	87.80 m <sup>2</sup>
SATILABİLİR ALAN	107.22 m <sup>2</sup>
DEPO	3.00 m <sup>2</sup>



ANAHATIR VAZİYET PLANI



ANAHTAR PLAN

ANAHATIR KESİT

**2+1 E.T1**

GİRİŞ HOLLÜ	6.22 m <sup>2</sup>
SALON	20.87 m <sup>2</sup>
MUTFAK	10.20 m <sup>2</sup>
YATAK ODASI	8.74 m <sup>2</sup>
E.YATAK ODASI	14.84 m <sup>2</sup>
E.BANYO	4.10 m <sup>2</sup>
BANYO	4.13 m <sup>2</sup>
HOL	3.23 m <sup>2</sup>
ZEMİN TERAS	19.77 m <sup>2</sup>

NET ALAN	70.1 m <sup>2</sup>
BRÜT ALAN	89.72 m <sup>2</sup>
SATILABİLİR ALAN	107.80 m <sup>2</sup>
TAHESİLİ TERAS	19.77 m <sup>2</sup>
DEPO	3.00 m <sup>2</sup>



ANAHATIR VAZİYET PLANI



ANAHTAR PLAN

ANAHATIR KESİT

Advert No:f-494589-1174

**2+1 D**

DEĞERLENDİRME: 83,00 m<sup>2</sup>  
 MİNA: 86,20 m<sup>2</sup>  
 YATIRIM GELİRİ: 8.900 TL  
 3 YATIRIM GELİRİ: 8.900 TL  
 KİRALAMA: 1.500 TL  
 MİNA: 86,20 m<sup>2</sup>  
 MİNA: 86,20 m<sup>2</sup>  
 MİNA: 86,20 m<sup>2</sup>  
 MİNA: 86,20 m<sup>2</sup>

ANALİZ PLANI  
ANALİZ PLANI  
ANALİZ KEŞİF

**2+1 B.T2**

DEĞERLENDİRME: 77,00 m<sup>2</sup>  
 MİNA: 80,00 m<sup>2</sup>  
 YATIRIM GELİRİ: 7.800 TL  
 3 YATIRIM GELİRİ: 7.800 TL  
 KİRALAMA: 1.300 TL  
 MİNA: 80,00 m<sup>2</sup>  
 MİNA: 80,00 m<sup>2</sup>  
 MİNA: 80,00 m<sup>2</sup>  
 MİNA: 80,00 m<sup>2</sup>

ANALİZ PLANI  
ANALİZ PLANI  
ANALİZ KEŞİF

**2+1 A.T**

DEĞERLENDİRME: 83,00 m<sup>2</sup>  
 MİNA: 86,20 m<sup>2</sup>  
 YATIRIM GELİRİ: 8.900 TL  
 3 YATIRIM GELİRİ: 8.900 TL  
 KİRALAMA: 1.500 TL  
 MİNA: 86,20 m<sup>2</sup>  
 MİNA: 86,20 m<sup>2</sup>  
 MİNA: 86,20 m<sup>2</sup>  
 MİNA: 86,20 m<sup>2</sup>

ANALİZ PLANI  
ANALİZ PLANI  
ANALİZ KEŞİF

**2+1 E**

DEĞERLENDİRME: 83,00 m<sup>2</sup>  
 MİNA: 86,20 m<sup>2</sup>  
 YATIRIM GELİRİ: 8.900 TL  
 3 YATIRIM GELİRİ: 8.900 TL  
 KİRALAMA: 1.500 TL  
 MİNA: 86,20 m<sup>2</sup>  
 MİNA: 86,20 m<sup>2</sup>  
 MİNA: 86,20 m<sup>2</sup>  
 MİNA: 86,20 m<sup>2</sup>

ANALİZ PLANI  
ANALİZ PLANI  
ANALİZ KEŞİF

**2+1 C.T**

DEĞERLENDİRME: 77,00 m<sup>2</sup>  
 MİNA: 80,00 m<sup>2</sup>  
 YATIRIM GELİRİ: 7.800 TL  
 3 YATIRIM GELİRİ: 7.800 TL  
 KİRALAMA: 1.300 TL  
 MİNA: 80,00 m<sup>2</sup>  
 MİNA: 80,00 m<sup>2</sup>  
 MİNA: 80,00 m<sup>2</sup>  
 MİNA: 80,00 m<sup>2</sup>

ANALİZ PLANI  
ANALİZ PLANI  
ANALİZ KEŞİF

**2+1 B.T1**

DEĞERLENDİRME: 77,00 m<sup>2</sup>  
 MİNA: 80,00 m<sup>2</sup>  
 YATIRIM GELİRİ: 7.800 TL  
 3 YATIRIM GELİRİ: 7.800 TL  
 KİRALAMA: 1.300 TL  
 MİNA: 80,00 m<sup>2</sup>  
 MİNA: 80,00 m<sup>2</sup>  
 MİNA: 80,00 m<sup>2</sup>  
 MİNA: 80,00 m<sup>2</sup>

ANALİZ PLANI  
ANALİZ PLANI  
ANALİZ KEŞİF

**2+1 E.T2**

DEĞERLENDİRME: 83,00 m<sup>2</sup>  
 MİNA: 86,20 m<sup>2</sup>  
 YATIRIM GELİRİ: 8.900 TL  
 3 YATIRIM GELİRİ: 8.900 TL  
 KİRALAMA: 1.500 TL  
 MİNA: 86,20 m<sup>2</sup>  
 MİNA: 86,20 m<sup>2</sup>  
 MİNA: 86,20 m<sup>2</sup>  
 MİNA: 86,20 m<sup>2</sup>

ANALİZ PLANI  
ANALİZ PLANI  
ANALİZ KEŞİF