

YEDI MAVİ

TURKEY / ISTANBUL / BAKIRKÖY

Project Status:
Completed**Price Range:**
504,000 - 1,774,000 \$**Development Area:**
50,000 m²**New | For Investment |****Marina Properties | Seafront Properties | Luxury Property |**

Own Luxury and Stunning Sea Views in One of Istanbul's Most Beautiful Projects

Yedi Mavi: The Ultimate Address for Luxury and Elegance in the Heart of Istanbul

Yedi Mavi is where elegant modern design meets luxurious hotel-style amenities, making it the perfect choice for those seeking both refined living and a profitable investment.

Strategic Location in the Heart of European Istanbul

Located in the vibrant district of Bakirkoy, one of the most dynamic areas on the European side of Istanbul, the project boasts stunning views of the Sea of Marmara and the nearby marina. Its prime location offers seamless access to the E5 highway, Marmaray metro lines, and fast ferry routes, making it easy to commute across the city. The proximity to the sea and marina adds a unique value, attracting those who desire a modern, coastal lifestyle.

Luxurious Architectural Design Combining Comfort and Elegance

Yedi Mavi offers a stunning architectural design that merges modern aesthetics with thoughtful spatial planning. The spacious balconies provide breathtaking panoramic sea views, while the lush green spaces and serene fountains create a tranquil environment for residents. The interiors are equally luxurious, with high-quality finishes and fully integrated facilities, offering a premium living experience.

A Variety of Residential Units to Suit All Tastes

With a diverse range of residential units, from 1+1 to 5+1 duplexes, including panoramic and spacious apartments, Yedi Mavi caters to all living preferences. Every apartment is equipped with elegant modern finishes that highlight luxury and sophistication, ensuring residents enjoy an exceptional living experience.

Five-Star Hotel-Level Services

Yedi Mavi offers top-notch hotel-style services, including indoor and outdoor swimming pools, a fitness center, and a wellness club with a Turkish bath and sauna. The project also features a variety of recreational spaces, such as children's playgrounds and family-friendly activity areas, making it an ideal environment for families looking for an active and comfortable lifestyle.

Guaranteed Real Estate Investment with High Returns

Yedi Mavi is an excellent investment opportunity with guaranteed high returns. Its strategic location near major shopping centers like Olivium and Marmara Forum, as well as schools and universities, ensures long-term property value appreciation. The project's competitive pricing compared to similar developments makes it a smart choice for real estate investors.

Close to Prominent Natural and Recreational Facilities

In addition to its stunning sea views, Yedi Mavi is close to Atatürk Airport Park, one of the largest national parks in Istanbul, offering residents the opportunity to enjoy vast green spaces and nature. The project also boasts a 1,200-meter private beach, providing a unique coastal experience for sea lovers and those seeking relaxation.

Developed by Leading Turkish Construction Companies

The project is developed by one of Turkey's most renowned construction companies, known for its extensive global experience in creating luxurious developments. Yedi Mavi blends luxury, comfort, and promising investment opportunities, making it a comprehensive project for modern living in the heart of Istanbul.

Land m² : 53,000

LOCATION :

Near to Street, Near the Sea, By E5 Highway, Near to E5 Highway, Close to Subway, Near to Highway, Close to bus terminal, Close to Coast, Close to Eurasia Tunnel,

ENVIRONMENT :

Shopping Center, Bank, Gas Station, Mini Movie Theater, Drugstore, Drugstore / Medical, Entertainment Center, Hospital / Health facility, Nursery, Coiffure & Beauty Center, High School, School (Education facility), Patisserie & Bakery, Police Station, Post Office, Restaurant, Health Center, Veterinary, Dry-Cleaning, Close to Eurasia Tunnel,

INFRASTRUCTURE :

Earthquake Regulation Proof, Earthquake Resistant, Ground Survey,

COMPOUND :

Security, Intercom, Cable TV / satellite, Parking - Outdoor, Parking - Indoor, Ground Heating, Carry Lift/Elevator, Security System, Indoor Garage, Suitable for Disabled, Fire Alarm, Security Camera,

CONSTRUCTION PROPERTIES :

Heat Proofing, High Entrance, Glass Coated, Sound Isolation,

SCENERY :

Sea View, Nature View, City View, Close to Marine Transportation,

FACILITY ACTIVITIES :

Children Swimming Pool, Fitness Center, Social Facility, Gym, Tennis, Jogging / Walking Areas, Swimming Pool, Swimming Pool (Indoor), Sauna (General), Turkish Hammam,

ESTATE TYPES



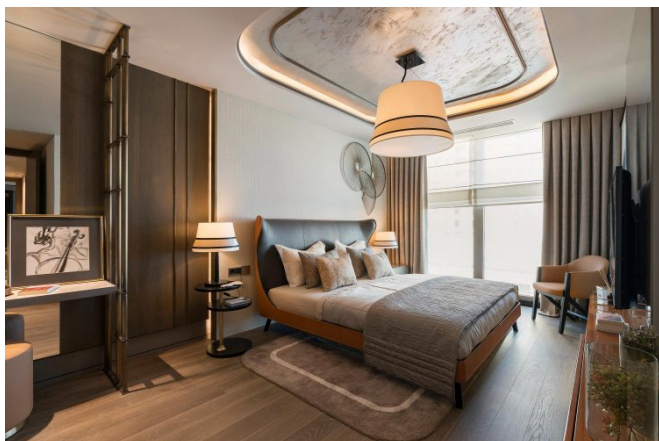
1,774,000 \$

259 m² , 4 + 2
For Sale, Apartment



1,702,000 \$

223 m² , 4 + 1
For Sale, Apartment



1,187,000 \$

159 m² , 3 + 2
For Sale, Apartment



985,000 \$

143 m² , 3 + 1
For Sale, Apartment



1,048,000 \$

121 m² , 2 + 1
For Sale, Apartment



504,000 \$

70 m² , 1 + 1
For Sale, Apartment

